



# 2002 PSYLO U-TURN SERVICE GUIDE (FOR C, XC & SL)

## Table of Contents

Tools Needed .....	2
Remove Lower Tube Assembly .....	2
Remove Damper Assembly (Right Side) .....	3
Remove the U-turn Spring Assembly (Left Side) .....	4
Install the U-Turn Spring and Damper Assemblies .....	5
Clean the Upper Tubes .....	5
Install the Lower Tube Assembly .....	6
Warranty .....	7
2002 Psylo C .....	8
2002 Psylo XC .....	9
2002 Psylo SL .....	10
International Distributors .....	12

For exploded diagram and part number information, refer to the 2002 Spare Parts Catalog, P/N 950-006157-00. Contact your local distributor or visit the RockShox website at [www.rockshox.com](http://www.rockshox.com) for ordering information.

Information contained in this publication is subject to change at anytime without prior notice.

For the latest technical information, visit our website at [www.rockshox.com](http://www.rockshox.com).

Names used in this manual may be trademarks or registered trademarks of others.

## TOOLS NEEDED

- 2.5 and 5 mm Hex Wrench
- Oil Pan
- Torque Wrench
- Plastic Face Mallet
- 24 mm 6-point Socket
- Small Blade Screwdriver
- Snap ring pliers
- 12" long cylindrical rod (plastic or wood)
- RockShox 5 wt. Oil
- RockShox RedRum
- Safety Glasses

After every 50 hours of riding or less depending on riding conditions and riding style, the following service should be performed. This service should be performed by a qualified mechanic, using proper tools.

**NOTE: SERVICE ON YOUR FORK MAY BE PERFORMED WHILE STILL INSTALLED ON YOUR BICYCLE. USE THE EXPLODED VIEWS AT THE END OF THIS GUIDE TO IDENTIFY AND REFERENCE PARTS.**

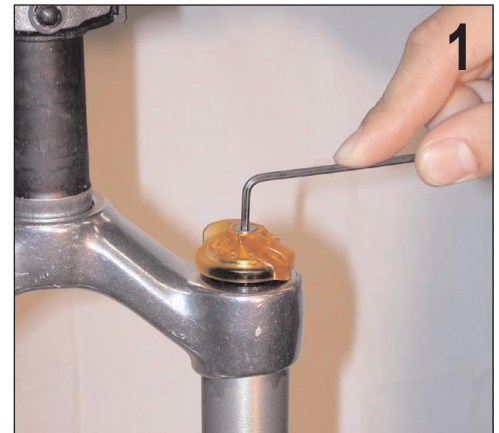
**FOR INFORMATION REGARDING PURE SYSTEM SERVICE (PSYLO SL), REFER TO THE PURE SYSTEM SERVICE GUIDE ON OUR WEBSITE AT [WWW.ROCKSHOX.COM](http://WWW.ROCKSHOX.COM).**

## REMOVE LOWER TUBE ASSEMBLY

1. Use a 2.5mm hex wrench to remove the screw on top of the U-Turn adjuster knob. Slowly remove the U-Turn adjuster knob.

**NOTE: TAKE CARE NOT TO LOSE DETENT BALLS (3). THE DETENT BALLS ARE SPRING LOADED!**

2. Using a magnet, remove detent balls and springs from the top cap. Note orientation of detent balls and springs within the top cap, they must be reinstalled in the same orientation.



# 2002 PSYLO U-TURN SERVICE GUIDE

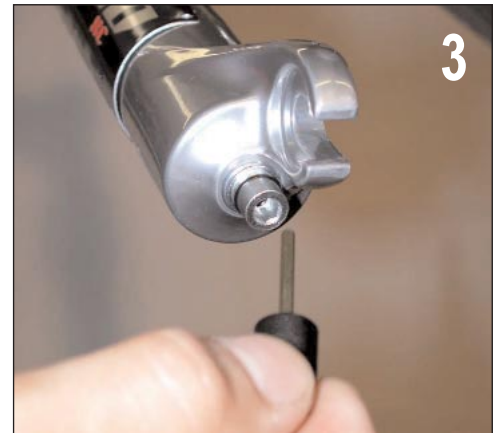
- Psylo XC/SL: Gently pull downward to remove the external rebound adjuster knob from the right shaft bolt.

**TIP: RIGHT AND LEFT SIDE IS DETERMINED FROM THE RIDER'S PERSPECTIVE.**

- With a 5 mm hex wrench, loosen the shaft bolts five turns and firmly tap them with a plastic faced mallet to separate the shafts from the lower tubes.

**TIP: TAPPING THE BOLTS RELEASES THE PRESSURE FIT BETWEEN THE LOWER LEGS AND THE SHAFTS.**

- Keep an oil pan below the fork to catch the oil. Inspect the condition of removed oil. If the oil is opaque and/or milky (water contamination), the lower tube assembly should be cleaned.
- Remove shaft bolts completely.



- Carefully slide the lower tube assembly off of the upper tubes. Use the oil pan to catch the excess oil.

**NOTE: CYCLE THE DAMPER SHAFT (RIGHT SIDE) UP AND DOWN TO ENSURE ALL OIL IS REMOVED.**

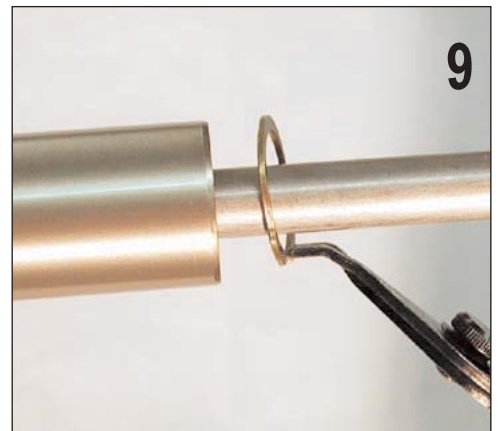
- Apply biodegradable solvent (Simple Green, Pedros, or isopropyl alcohol) to a clean rag and wrap a rag around a long cylindrical rod or screwdriver to clean the lower tube internals. Dry thoroughly.



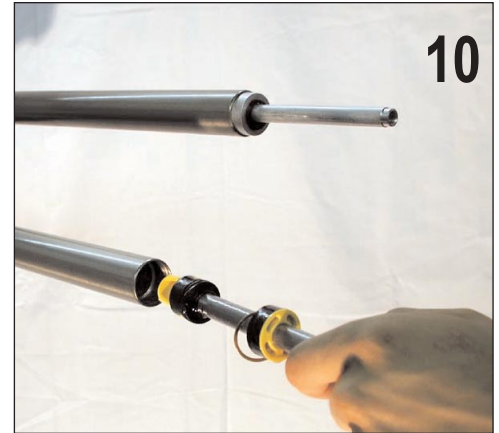
## REMOVE DAMPER ASSEMBLY (RIGHT SIDE)

Steps 9 and 10 apply to Psylo C and XC only. Use the Pure System Service Guide to remove the assemblies on the Pure side of the Psylo SL.

- Using snap ring pliers, remove the snap ring from the right upper tube (damper side).

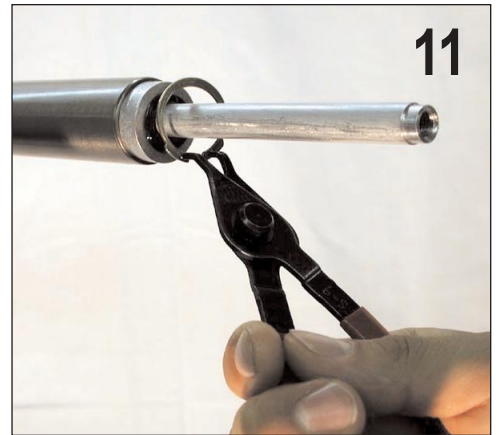


10. Remove the damper assembly from the right upper tube and inspect the o-ring for wear or damage. Replace each as necessary (Damper Assembly Kit: 110-005590-00; and Damper O-ring Bulk Packs 110-006452-10 or 110-006452-50).

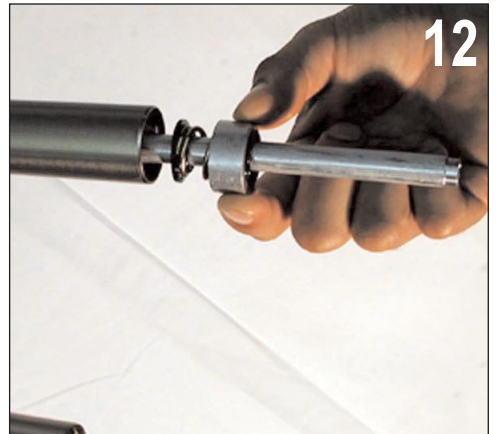


## REMOVE THE U-TURN SPRING ASSEMBLY (LEFT SIDE)

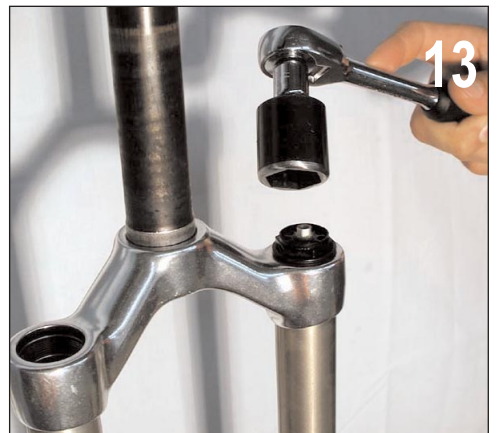
11. Remove the snap ring from the bottom of the left upper tube using snap ring pliers.



12. Carefully remove the base plate assembly from the U-Turn plunger shaft. Replace the assembly as necessary (110-006268-00).



13. With a 24 mm socket, remove the top caps. **For Psylo SL: See the Pure System Service Guide for removal of the Climb-it Control adjuster knob and top cap assembly.**



# 2002 PSYLO U-TURN SERVICE GUIDE

14. Remove the U-Turn spring assembly. Clean and reapply Judy Butter to the spring and spring isolator. Inspect top cap o-ring. To change springs to a softer or firmer rate, or replace the U-Turn spring assembly, use the following kits:

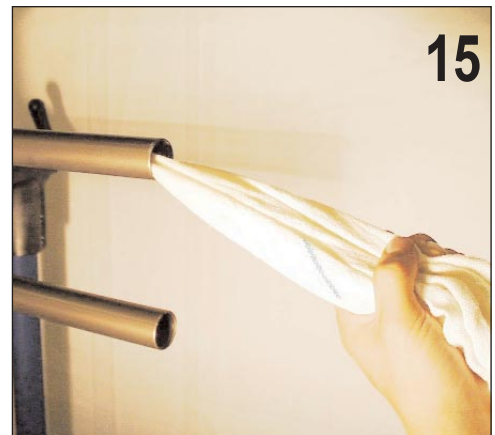
Description	Part Number	Rider Weight
U-Turn Assembly Kit, Soft	110-006270-01	←140 lb (63 kg)
U-Turn Assembly Kit, Med (standard)	110-006270-02	140 to 170 lb (63 to 77 kg)
U-Turn Assembly Kit, Firm	110-006270-03	→170 lb (77 kg)



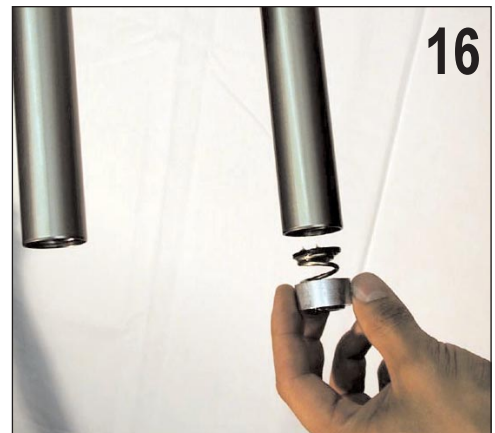
## CLEAN THE UPPER TUBES

15. Apply biodegradable solvent (Simple Green, Pedros or isopropyl alcohol) to a clean rag, wrap rag around a long cylindrical rod or screwdriver and clean the upper tube internals. Dry thoroughly.

**NOTE: USE CARE NOT TO SCRATCH THE INNER SURFACE OF THE TUBES.**

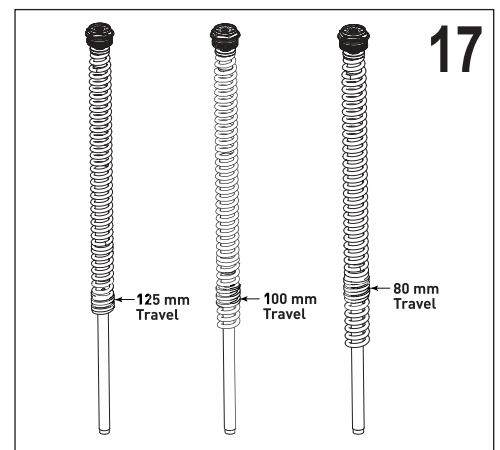


16. Install the base plate assembly (110-006268-00) w/snap ring into the bottom of the left upper tube.



## INSTALL THE U-TURN SPRING AND DAMPER ASSEMBLIES

17. Ensure the U-turn spring assembly rod is fully extended to 125 mm and install the assembly through the top of the left upper tube.





18. Press firmly and hand thread the U-Turn top cap 1.5-2 turns to start threads and prevent stripping the top cap. With a 24 mm socket torque the U-turn top cap to 40 in-lb.
19. **Psylo C and XC:** Install the damper assembly into the right upper tube and insert the snap ring.  
**Psylo SL:** Use the Pure System Service Guide to install the assemblies on the Pure side of the Psylo SL.
20. Install springs and detent balls into the U-Turn top cap. Be sure to install them in the same orientation that they were removed (see step 2 photo).
21. Using a 2.5 mm hex wrench, install the U-Turn adjuster knob and screw. Torque the screw to 12 in-lb.

**NOTE: DO NOT USE LOCTITE ON THE SCREW, IT WILL DAMAGE THE PLASTIC U-TURN ADJUSTER KNOB**



## INSTALL THE LOWER TUBE ASSEMBLY

22. Carefully slide the lower leg assembly onto the upper tube assembly. Stop when you feel/hear the lower bushing engage the upper tube. This will allow room to pour oil into the lower leg bolt hole.  
**TIP: CHECK YOUR DUST SEALS TO ENSURE PROPER FIT AROUND THE UPPER TUBES.**
23. Invert the fork, and add 20cc of RockShox 5wt oil into the bottom of the left lower leg (U-Turn side), through the bolt hole.

**TIP: THE U-TURN SHAFT SHOULD NOT BE SET IN THE LOWER LEG CASTING YET. THIS WILL ALLOW CLEARANCE FOR THE OIL TO FILL THE LEG.**

24. Inspect the nylon crush washers for wear or damage. Replace if necessary. Install U-Turn shaft bolt and torque to 60 in-lb.



25. Turn the fork right-side up. Insert a long plastic or wooden rod through the top of the right upper tube and lightly seat the damper into the casting. This will enable you to thread the shaft bolt into the damper.
26. **Psylo XC and SL only:** Insert the rebound adjuster knob into the damper and turn rebound valve to the full clockwise position BEFORE installing the shaft bolt.

**IMPORTANT!: THIS PREVENTS DAMAGE TO THE PLASTIC REBOUND ASSEMBLY IN THE SHAFT. REMOVE THE REBOUND ADJUSTER KNOB.**

27. Install the hollow (**solid bolt on Psylo C**) shaft bolt into damper shaft and torque to 60 in-lb. Insert the rebound adjuster knob through the hollow shaft bolt and press firmly to seat.



28. **Psylo C and XC only:** Add 140cc of RockShox 5 wt. oil into the top of the right upper tube (through the top cap hole).

**Psylo SL:** See the Pure System Service Guide for the appropriate refill fluid level for the right side.

29. Using a 24mm socket, install the top cap on the damper side (right). Torque to 40 in-lb.

**For Psylo SL:** See the Pure System Service Guide for installation of the Climb-It control adjuster knob and top cap assembly.





## WARRANTY

RockShox, Inc. warrants its products for a period of one year from original date of purchase to be free from defects in materials or workmanship. Any RockShox product that is returned to the factory and is found by RockShox to be defective in materials or workmanship will be repaired or replaced at the option of RockShox, Inc. This warranty is the sole and exclusive remedy. RockShox shall not be held liable for any indirect, special, or consequential damages.

The warranty does not apply to products which have not been properly installed and adjusted according to RockShox installation instructions. The warranty does not cover any product that has been subject to misuse or whose serial number has been altered, defaced or removed. This warranty does not cover paint damage or modifications to the product. Proof of purchase is required.

### WARRANTY REPAIR

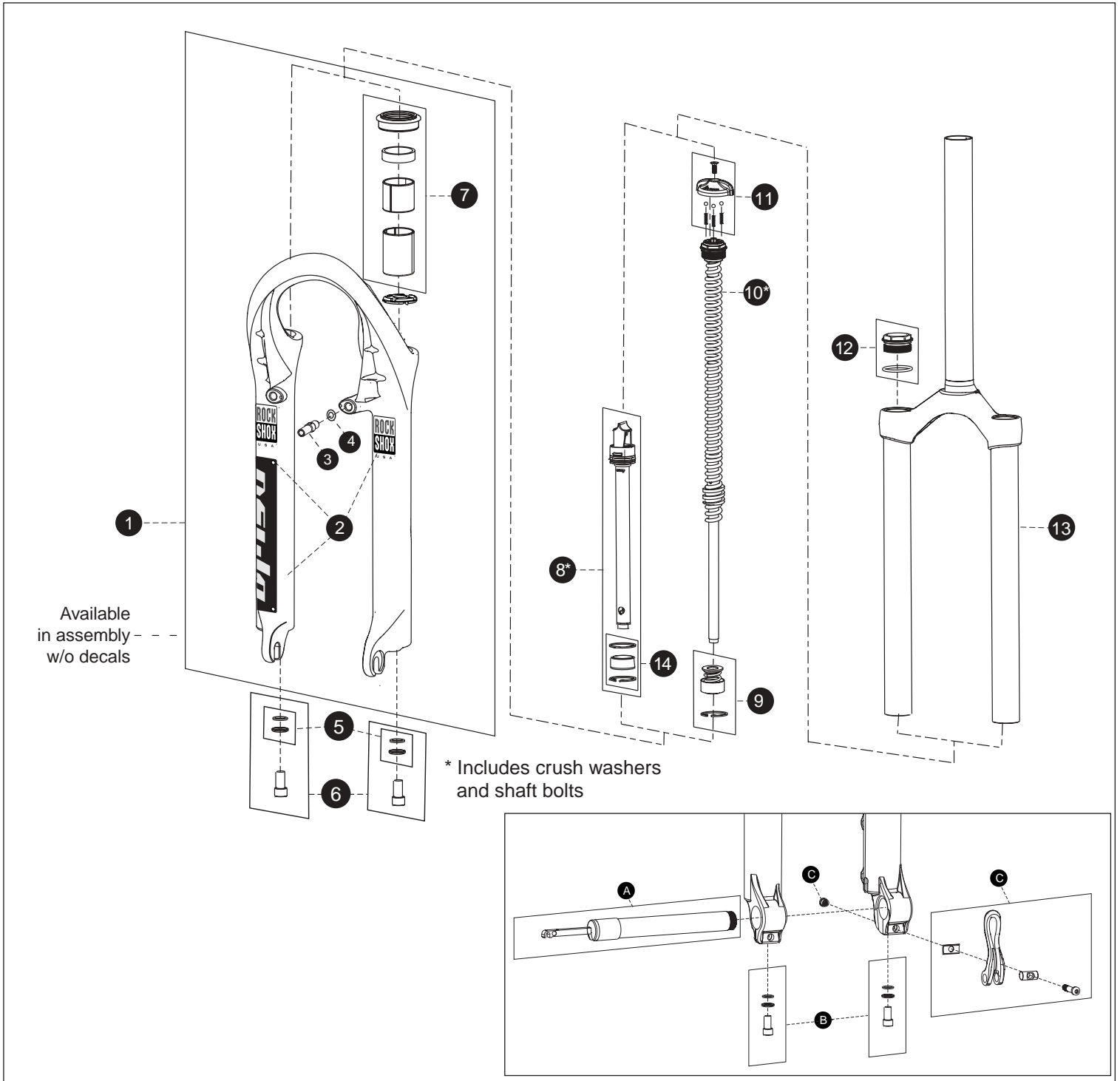
If for any reason it should be necessary to have warranty work done, return the product to the place of purchase. In the USA, Dealers should call for a Return Authorization number (RA#) prior to returning product.

Products returned for inspection must be sent freight prepaid and with proof of purchase to:

RockShox, Inc.  
1610 Garden of the Gods  
Colorado Spring, CO 80907

For more technical information, visit our website at [www.rockshox.com](http://www.rockshox.com). For toll-free technical support in the USA, call 1.800.677.7177.

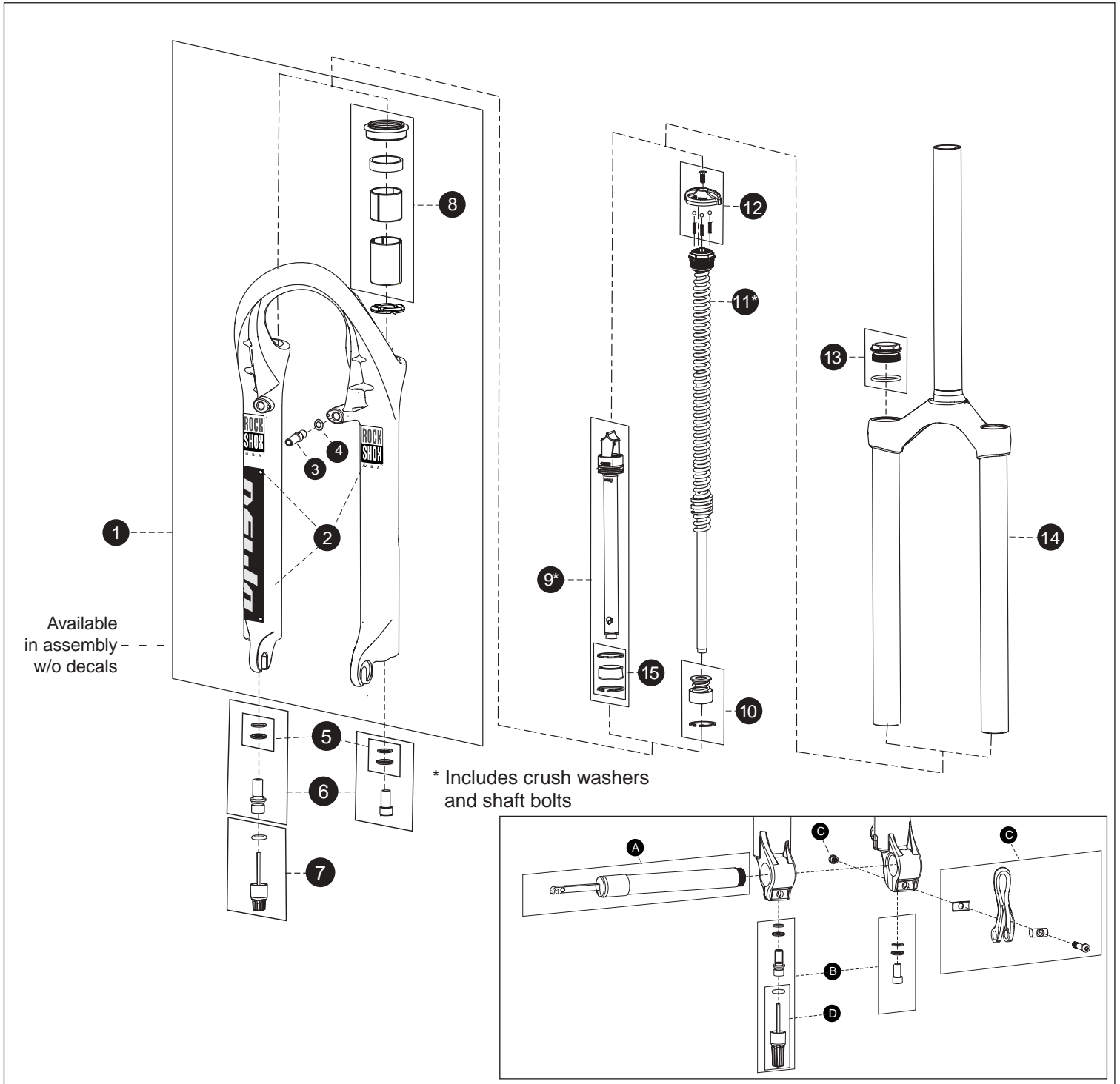
**Customers in countries other than the USA should contact their local dealer or distributor.**



1	Psylo LL, Conventional w/Boss, Black	110-006267-00	7	Psylo Revive Kit	110-006350-00	<b>Tullio Hardware</b>		
	Psylo LL, w/Boss, Pearl Silver	110-006267-08	8	Psylo XC Damper Assy	110-005590-00	A	Tullio Axle Kit	110-005653-00
	Psylo Tullio LL, Disc Only, Black	110-006272-00	9	02 U-turn Base Plate Assembly Kit	110-006268-00	B	Tullio External Hardware Kit	110-005652-00
	Psylo Tullio LL, Disc Only, Pearl Silver	110-006272-08	10	U- Turn Assembly Kit, Soft	110-006270-01	C	Tullio Lower Leg Hardware	110-005654-00
	Psylo LL, Disc Only Conventional, Black	110-006298-00		U- turn Assembly Kit, Medium	110-006270-02			
	Psylo LL, Disc Only Conv., Pearl Silver	110-006298-08		U- turn Assembly Kit, Firm	110-006270-03			
2	02 Psylo C Steel Str Decal Kit	110-006271-00	11	U-turn Adjuster Knob Kit	110-006269-00		<b>Not Shown:</b>	
	02 Psylo C Aluminum Str Decal Kit	110-006271-01	12	Psylo XC Non-Adjustable Top Cap	110-005605-00		Disc Brake Cable Accessory Kit	110-006344-00
3	Brake Post	48131	13	Psylo XC Crwn/SteelStr/Uppr, 1-1/8 Thrdless	110-005594-00		Psylo C/XC Damper O-ring, Qty 10	110-006452-10
4	Flat Washer	52261		Psylo XC Crwn/AlumStr/Uppr, 1-1/8 Thrdless	110-005668-00		Psylo C/XC Damper O-ring, Qty 50	110-006452-50
5	Crush Washer Kit	110-005552-00						
6	Hydra Air/ Hydra Coil Ext. Hardware Kit	110-005651-00						



# 2002 PSYLO XC

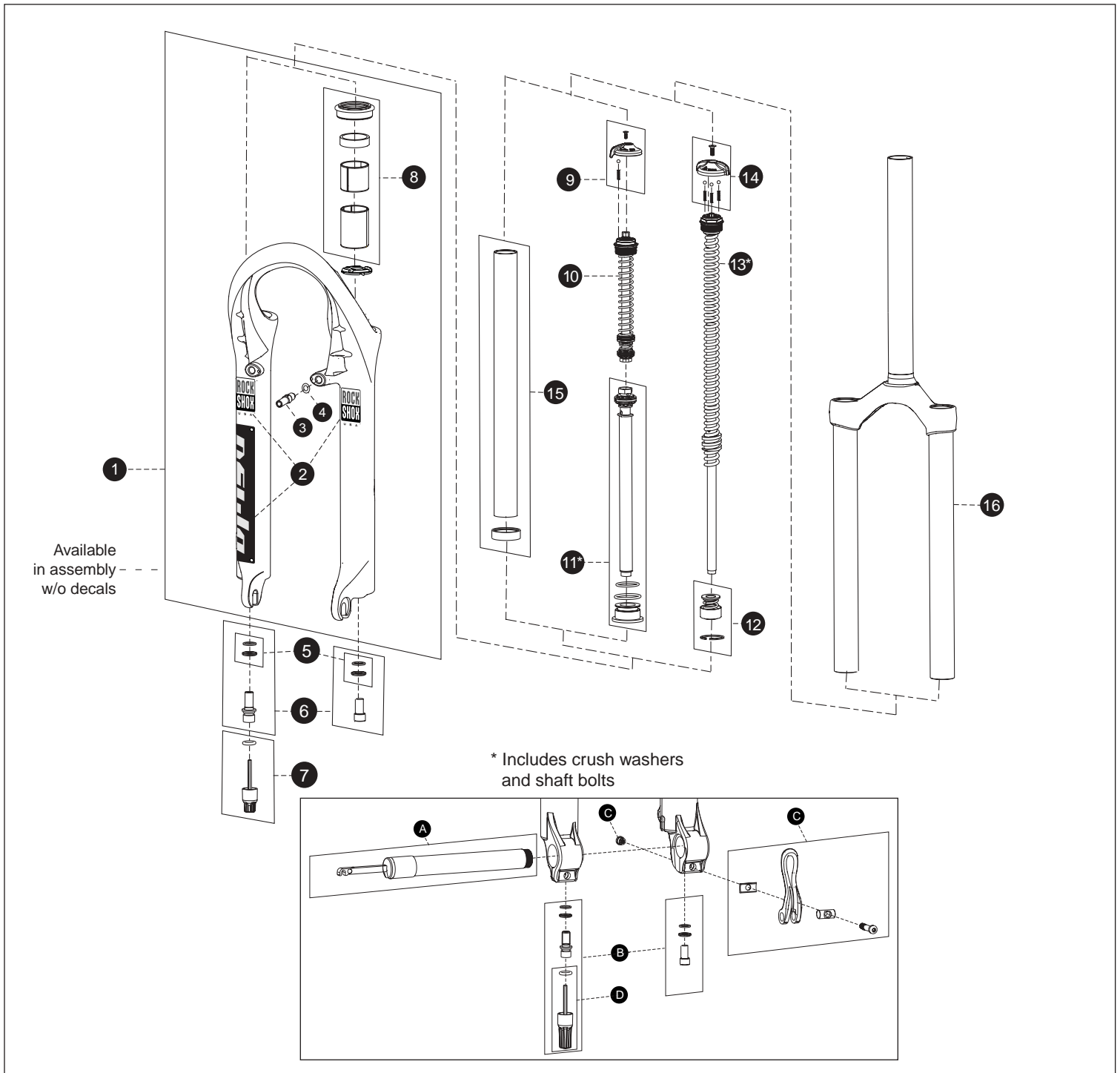


- 1 Psylo LL, Conventional w/Boss, Black 110-006267-00
- Psylo LL, w/Boss, Silver 110-006267-08
- Psylo Tullio LL, Disc Only, Black 110-006272-00
- Psylo Tullio LL, Disc Only, Silver 110-006272-08
- Psylo LL, Disc Only Conventional, Black 110-006298-00
- Psylo LL, Disc Only Conventional, Silver 110-006298-08
- 2 02 Psylo XC Steel Str Decal Kit 110-006273-00
- 02 Psylo XC Aluminum Str Decal Kit 110-006273-01
- 3 Brake Post 48131
- 4 Flat Washer 52261
- 5 Crush Washer Kit 110-005552-00
- 6 Hydra Air/ Hydra Coil Ext. Hardware Kit 110-005651-00

- 7 Psylo Conventional Rebound Adj. Knob 110-005603-00
- 8 Psylo Revive Kit 110-006350-00
- 9 Psylo XC Damper Assy 110-005590-00
- 10 U-turn Base Plate Assembly Kit 110-006268-00
- 11 U-turn Assembly Kit, Soft 110-006270-01
- U-turn Assembly Kit, Medium 110-006270-02
- U-turn Assembly Kit, Firm 110-006270-03
- 12 U-turn Adjuster Knob Kit 110-006269-00
- 13 01 Psylo XC Top Cap, Non-Adjust 110-005605-00
- 14 Psylo XC Crwn/SteelStr/Uppr, 1-1/8 Thrdless 110-005594-00
- Psylo XC Crwn/AlumStr/Uppr, 1-1/8 Thrdless 110-005668-00

- Tullio Hardware**
- A Tullio Axle Kit 110-005653-00
  - B Tullio External Hardware Kit 110-005652-00
  - C Tullio Lower Leg Hardware 110-005654-00
  - D Tullio Rebound Adjuster Knob Kit 110-006343-00

- Not Shown:**
- Disc Brake Cable Accessory Kit 110-006344-00
  - Psylo C/XC Damper O-ring, Qty 10 110-006452-10
  - Psylo C/XC Damper O-ring, Qty 50 110-006452-50



1	Psylo LL, Conventional w/Boss, Black	110-006267-00	9	Climb-it Control Adjuster Knob	110-005558-00	<b>Tullio Hardware</b>		
	Psylo, Conventional w/Boss, Pearl White	110-006267-19	10	01 Psylo SL/Race Pure Compression Assy	110-005586-00	A	Tullio Axle Kit	110-005653-00
	Psylo Tullio LL, Disc Only, Black	110-006272-00	11	01 Psylo SL/Race Rebound Assembly	110-005589-00	B	Tullio External Hardware Kit	110-005652-00
	Psylo Tullio LL, Disc Only, Pearl White	110-006272-19	12	U-turn Base Plate Assembly Kit	110-006268-00	C	Tullio Lower Leg Hardware	110-005654-00
	Psylo LL, Disc Only Conventional, Black	110-006298-00	13	U-turn Assembly Kit, Soft	110-006270-01	D	Tullio Rebound Adjuster Knob Kit	110-006343-00
	Psylo LL, Disc Only Conv., Pearl White	110-006298-19		U-turn Assembly Kit, Medium	110-006270-02			
2	02 Psylo SL Decal Kit	110-006274-00		U-turn Assembly Kit, Firm	110-006270-03	<b>Not Shown:</b>		
3	Brake Post	48131	14	U-turn Adjuster Knob Kit	110-006269-00		Disc Brake Cable Accessory Kit	110-006344-00
4	Flat Washer	52261	15	Psylo Pure Tube	110-005557-00		Pure Rebuild Kit	110-006245-00
5	Crush Washer Kit	110-005552-00	16	Psylo SL Crwn/Str/Uppr, 1-1/8 Thrdless	110-005597-00		Pure Compression adjuster Rod Kit	110-006324-00
6	Hydra Air/Hydra Coil Ext.Hardware Kit	110-005651-00						
7	Psylo Conventional Rebound Adj. Knob	110-005603-00						
8	Psylo Revive Kit	110-006350-00						



# 2002 PSYLO U-TURN SERVICE GUIDE

---



# INTERNATIONAL DISTRIBUTORS

**Argentina**

Broni S.A.  
Phone: 54 11 4292 3000  
FAX: 54 11 4292 4453  
J.J. PASO 1260, (1832) LOMAS DE ZAMORA,  
BUENOS AIRES

**Australia**

Steve Cramer Products  
Phone: 61 3 9587 1466  
FAX: 61 3 9587 2018  
39 INDUSTRIAL DRIVE BRAESIDE, VICTORIA  
3192

**Austria**

Barisitz-Austria  
Phone: 43 0 5223 46444  
FAX: 43 0 5223 46444-14  
A-6060 Mils  
Gewerbepark 12

**Belgium**

Vertex Cycle Systems BV  
Phone: 31 23 57 18184  
FAX: 31 23 57 18606  
FLEMINGSTRAAT 100A, 2041 VL ZANDVOORT  
HOLLAND

**Bulgaria**

Rog 2000  
Phone: 3592 44 7042  
FAX: 3592 943 3445  
18, IVAN ASSEN STR.  
1000 SOFIA

**Brazil**

Pedal Power  
Phone: 55 11 3845 6997  
FAX: 55 11 3845 6377  
R. GOMES De CARVALHO 541  
SAO PAULO SO  
04547002

**Canada**

Cycles Lambert  
Phone: 800 463-4452 (Quebec)  
FAX: 800 461 1685  
100 Rue des Riveurs  
LEVIS, QUEBEC  
G6V 9G3

**Chile**

Bicicletas Belda Limitada  
Phone: 56 32 881799  
FAX: 56 32 978799  
14 NORTE 1001  
VINA DEL MAR

**Costa Rica**

Inversiones Y Sistemas Garvi  
Phone: 506 296 3383  
FAX: 506 289 7013  
P.O. BOX 4805-1000, SAN JOSE

**Croatia**

Ciklo-Centar  
Phone: 385 1 234 22 24  
FAX: 385 1 234 34 22  
JURJA VES 30A  
10000 ZAGREB

**Czech Republic**

Vanek Praha  
Phone: 42 0 312 698 1889  
FAX: 42 0 312 698 025  
CERRENY UJEZD 185, UNHOST, 27351

**Denmark**

Duell A/S  
Phone: 45 86 36 7800  
FAX: 45 86 36 7377  
MOLLERUPVEJ 3, TAASTRUP, 8410 RONDE

**Ecuador**

Bici Sport  
Phone: 5932 248737  
FAX: 5932 253691  
AV DE DICIEMBRE 6327, ENTRE LOUVRE Y  
TOMAS DE, BERLANGA.LOCAL #3, QUITO

**Estonia**

Hawaii Express  
Phone: 372 6 398 508  
FAX: 372 6 398 566  
REGATI 1, 5K-102, TALLINN, 11911, Estonia  
Or  
Estonian Unidream  
Phone: 372 636 7470  
Fax: 372 636 7470  
Paavli 2A, Tallinn  
EE0004, Estonia

**Finland**

Mr. Cool OY  
Phone: 358 9 3250817  
FAX: 358 9 3250609  
LINNAVUORENTIE 28, HELSINKI, 00950

**France**

Royal Velo France  
Phone: 33 325 433 730  
Fax: 33 325 43 95 95  
4 RUE DES AZALEES, P.A. SUD-CHAMPANGE  
ST THIBAUT, 10800

**Germany**

Sport Import GmbH  
Phone: 49 44 05 9280 0  
FAX: 49 44 05 9280 49  
INDUSTRIESTRASSE 41 B, EDEWECHT, 26188

**Greece**

Gatsoulis Stefanos Imports  
Phone: 30 12512 779  
FAX: 30 12533 960  
8 THESSALONIKIS STREET, NEW FILADELFIA,  
ATHENS, T.T. 14342

**Guatemala**

BYS Importaciones S.A.  
Phone: 502 366 7709  
FAX: 502 363 3918  
18 CALLE 7-48, ZONA 10, GUATEMALA

**Holland**

Vertex Cycle Systems BV  
Phone: 31 23 57 18184  
FAX: 31 23 57 18606  
FLEMINGSTRAAT 100A, 2041 VL ZANDVOORT  
HOLLAND

**Hong Kong**

Flying Ball Bicycle Company  
Phone: 852 23813661  
FAX: 852 23974406  
201 TUNG CHOI ST. G/F, MONGKOK KOWLOON

**Hungary**

Prokero Ltd Co.  
Phone: 361 331 3184  
FAX: 361 331 3184  
KALMAN IMRE UTCA 23, BUDAPEST, 1054

**Iceland**

Orninn Hjól Ltd  
Phone: 354 588 9892  
FAX: 354 588 9896  
SKEIFAN 11, P.O. BOX 8036, REYKJAVIK

**Ireland**

Madison  
Phone: 44 20 8385 3385  
Fax: 44 20 8385 3443  
BUCKINGHAME HOUSE EAST, THE BROADWAY  
STANMORE, MIDDLESEX HA7 4EA  
UNITED KINGDOM

**Israel**

Becidan Cycles  
Phone: 972 9 954 9165  
FAX: 972 9 954 9165  
92 SOKOLOV HERZELYA

**Italy**

Motorquality  
Phone: 39 02 24 951 1  
FAX: 39 02 24 951 228  
20099 SESTO S. GIOVANNI, (MI) I VIA VENEZIA,  
(ANG. VIA CARDUCCI), MILANO

**Japan**

Yoshigai Corporation  
Phone: 81 6 4309 2530  
FAX: 81 6 4309 2532  
74-3 Nagata-Higashi,  
Higashi-Osaka, Japan

## Korea

OD Bike Inc.  
Phone: 82 2 474 0818  
Fax: 82 2 474 0656  
3F 379-20 SUNGNAE-DONG, KANGDONG-KU,  
SEOUL, 134-030

## Latvia

Veloserviss  
Phone: 371 750 1292  
Fax: 371 750 1298  
1/1 HAPSALAS ST., RIGA, LV-1005

## Luxembourg

Vertex Cycle Systems BV  
Phone: 31 23 57 18184  
FAX: 31 23 57 18606  
FLEMINGSTRAAT 100A, 2041 VL ZANDVOORT  
HOLLAND

## Malaysia

Gin Huat Cycle Trading  
Phone: 603 6189 1663  
FAX: 603 6189 1662  
NO. 8, JALAN INDUSTRI BATU CAVES ½  
TAMAN PERINDUSTRIAN BATU CAVES  
68100 BATU CAVES  
SELANGOR DARUL EHSAN

## Mexico

Tekno Bike & Outdoor Prod.  
Phone: 52 8 343 1550  
FAX : 52 8 343 1275  
Porfirio Diaz #469  
Col Centro CP 6400  
Monterey, NL Mexico

## New Zealand

W.H. Whorrall & Co. Ltd.  
Phone: 64 9 63 6 06 41  
FAX: 64 9 63 6 06 31  
43 FELIX ST  
PENROSE, AUCKLAND  
NEW ZEALAND

## Norway

Hallman Sports  
Phone: 46 18 56 16 00  
FAX: 46 18 50 03 22  
HALLNASGATAN 8, S-75228 UPPSALA, SWEDEN

## Panama

Distribuidora Rali S.A.  
Phone: 507 220-3844  
FAX: 507 220-5303  
VIA ESPANS EDIFICA CARCEP, P.O. BOX 87-0852,  
PANAMA 7

## Peru

Rojo Sports  
Phone: 511 447 0838  
FAX: 511 447 0838  
AV. REPUBLICA DE, PANAMA 6513, LIMA 33

## Poland

Giant Polska S.P. ZOO  
Phone: 48 22 645 14 34  
FAX: 48 22 645 14 36  
AL NIEPODLEGLOSCI 221-4, 02-087 WARSZAWA

## Portugal

Bicimax  
Phone: 351 244 553276  
FAX: 351 244 553187  
APARTADO 34, 2431 MARINHA GRANDE

## Russia

Sportex  
Phone: 7095 288 4524  
FAX: 7095 288 6888  
KUDRINSKAYA PL., 1,, P.O.BOX 33, MOSCOW,  
123242

## St. Maarten

Tri-Sport International  
Phone: 5995 43462  
FAX: 5995 43928  
8 AIRPORT BOULEVARD, SIMPSON BAY,  
NAMIBIA

## Singapore

Trekology Bikes 3  
Phone: 65 466 2673  
FAX: 65 466 7610  
24 HOLLAND GROVE ROAD, SINGAPORE, 1545

## Slovak Republic

Paul Lange Oslany  
Phone: 42 1 862 5492 344  
FAX: 42 1 862 5492 350  
MIEROVA 854/37 OSLANY, 97247 SLOVAKIA

## Slovenia

Proloco Trade  
Phone: 386 64 380 200  
FAX: 386 64 380 2022  
ENOTA KRANJ, BRITOF 96A, 4000 KRANJ

## South Africa

Coolheat (SA) (PTY) Ltd.  
Phone: 27 11 807 5282  
FAX: 27 11 807 2998  
3 RUARGH STREET, PARK CENTRAL, P O BOX  
740, JOHANNESBURG 2001

## Spain

K. Motor Dealer S.L.  
Phone: 34 9 1 637 70 97  
FAX: 34 9 1 637 72 64  
PARQUE INDUSTRIAL, EUROPOLIS EDIFICO  
BRUSELA, BLOQUE 4, NAVE 1, LAS ROZAS  
(MADRID), N/A, 28230

## Sweden

Hallman Sports  
Phone: 46 18 56 16 00  
FAX: 46 18 50 03 22  
HALLNASGATAN 8, S-75228 UPPSALA

## Switzerland

Cilo Bike Service SA  
Phone: 41 21 641 63 30  
FAX: 41 21 641 63 82  
CH. DE L'ORIO 30 A, CASE POSTALE 64, CH-  
1032 ROMANEL S. LAUSANNE

## Taiwan

Biketech Co. Ltd.  
Phone: 886 22 694 5806  
FAX: 886 22 694 6133  
NO. 12 FU TEH ROAD, 266 LANE, 37 ALLEY  
HSICHIH, TAIPEI HSIEN, TAIWAN, R.O.C.

## Thailand

Probike Co. Ltd.  
Phone: 662 254 1077  
FAX: 662 254 1078  
237/2 SARASIN ROAD, LUMPINNE, PATUMWAN,  
BANGKOK, 10330

## Turkey

EBSAT  
Phone: 90 212 514 0525  
FAX: 90 212 519 4846  
EBSAT EMEK BISIKLET, EBUSUUD CAD NO.67,  
34410 SIRKECI, ISTANBUL, 34410

## United Kingdom

Madison  
Phone: 44 20 8385 3385  
Fax: 44 20 8385 3443  
BUCKINGHAME HOUSE EAST, THE BROADWAY  
STANMORE, MIDDLESEX HA7 4EA  
UNITED KINGDOM

## Venezuela

Bike Sports  
Phone 582 751 9709  
FAX: 582 753 5071  
CENTRO COMERCIAL IBARRA, PLANTA BAJA,  
LOCAL 3-A CALLE GARCILAZO, COLINAS DE  
BELLO, 0, CARACAS